

## VIEW: Software Update Guide

### STEP 1: Download the software



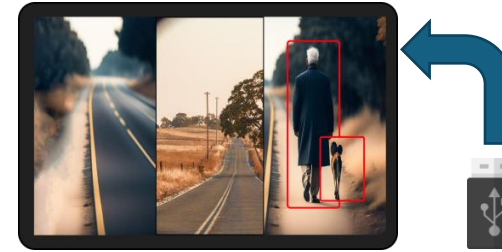
1. On your laptop or PC with Internet connection, visit:  
<https://access.agcocorp.com/en/products/view.html>
2. Navigate to **MAINTENANCE** and then to **SOFTWARE UPDATES** . Here you will find the latest software available and how to check if you have the latest version already. If you do, there is no need to update.
3. If you don't, press on:  
[Download VIEW Software](#)  
VIEW's software will automatically start downloading on your "Downloads" folder.
4. Once the software file is downloaded, you will find it under the name: **view-x.x.swu** (x.x refers to the version number, i.e. 1.0, 1.1, etc.)

### STEP 2: Transfer software to USB stick



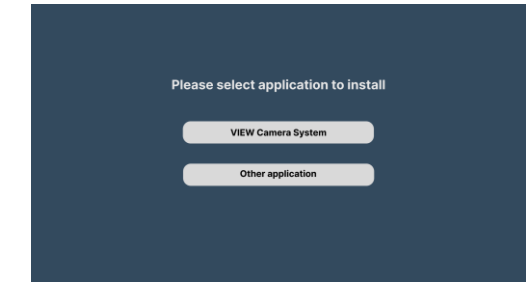
1. Connect your USB stick and open the folder that shows the files currently in it.
2. On a separate window, open your "Downloads" folder.
3. Make sure both windows are visible side by side.
4. Drag the **view-x.x.swu** from your "Downloads" folder window to your USB window.
5. A progress bar will indicate how much time it will take for the transfer to take effect.
6. Once done transferring, close all windows and eject the USB stick as shown here:  
[Eject USB Safely](#)

### STEP 3: Start up VIEW



1. On your tractor, start up the VIEW on your SMAG Terminal as you normally do.
2. Once you see the camera feeds, connect the USB that contains the **view-x.x.swu** file.

### STEP 4: Selecting VIEW



1. After a few seconds, the SMAG Terminal will display the content in the image above where you will be asked to select an application to install.
  2. Press on the "VIEW Camera System" button to start VIEW's Update installation.
- Note:** If by accident you press on "Other application" don't panic. You can always go back to this screen.

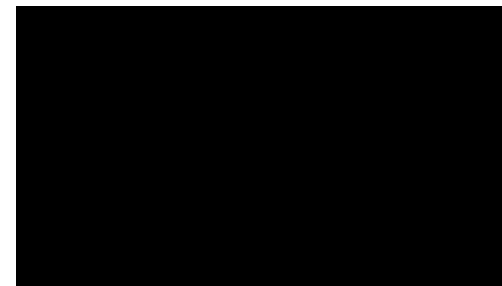
### STEP 5: Installing VIEW



Once you click "VIEW Camera System," the installation will begin. A progress bar at the bottom of the screen will show the installation progress.

**⚠ Warning**  
**Do not turn off the SMAG Terminal until the installation is complete!**

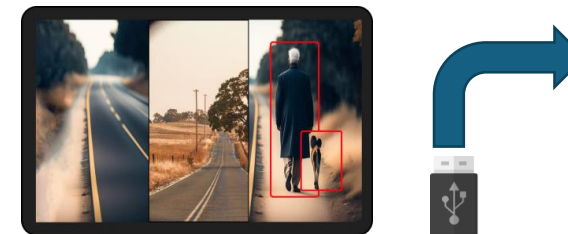
### STEP 6: Waiting until completion



Once the progress bar at the bottom of the screen reaches 100%, the SMAG Terminal screen will turn black. Even though it looks like the terminal is off, it is not! Wait patiently until the VIEW application starts.

**⚠ Warning**  
**Do not turn off the SMAG Terminal until the installation is complete!**

### STEP 7: Installation completed



If the VIEW application starts normally, congratulations! You have successfully updated VIEW in your SMAG Terminal.

**Note:** Remember to unplug the USB stick.



**Learn more about VIEW at:**  
<https://access.agcocorp.com/en/products/view.html>

