

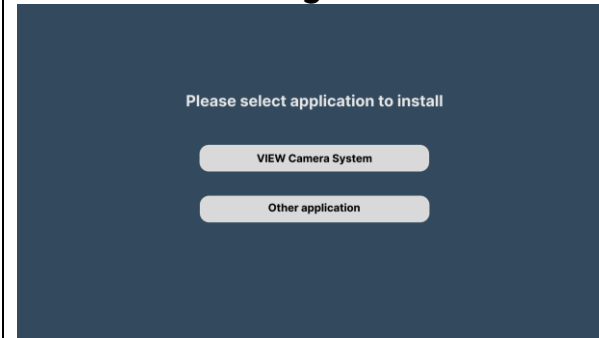
# VIEW: Software Installation Guide

## STEP 1: Powering up the SMAG Terminal



Power up the SMAG Terminal by connecting it to your tractor's in-cab ISOBUS socket using the SMAG Terminal Power and ISOBUS Cable.

## STEP 2: Selecting VIEW



After powering up, the SMAG Terminal will display the content in the image where you will be asked to select an application to install.

Press on the "VIEW Camera System" button to start VIEW's installation.

**Note:** If by accident you press on "Other application" don't panic. You can always go back to this screen.

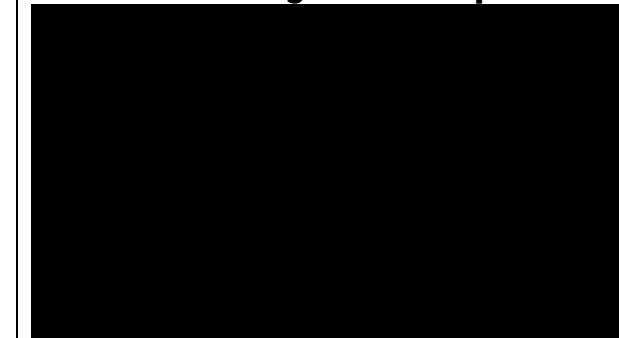
## STEP 3: Installing VIEW



Once you click "VIEW Camera System," the installation will begin. A progress bar at the bottom of the screen will show the installation progress.

**Warning**  
Do not turn off the SMAG Terminal until the installation is complete!

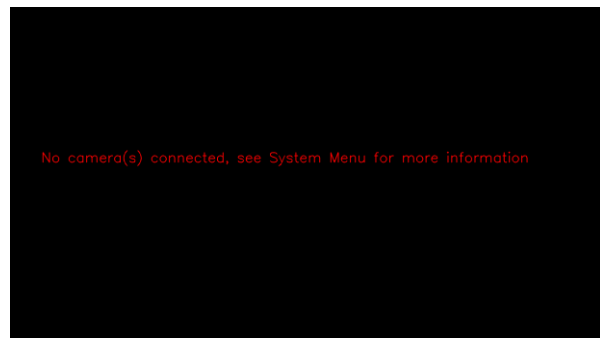
## STEP 4: Waiting until completion



Once the progress bar at the bottom of the screen reaches 100%, the SMAG Terminal screen will turn black. Even though it looks like the terminal is off, it is not! Wait patiently until the VIEW application starts.

**Warning**  
Do not turn off the SMAG Terminal until the installation is complete!

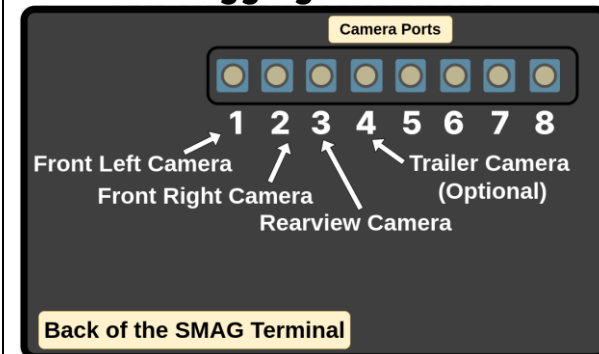
## STEP 5: No cameras available?



Do you see this message on the screen after the installation is completed? Don't worry and proceed to the next step.

Alternatively, if you have already connected the cameras in your SMAG Terminal, you will see all their streams on the screen so you can skip the following step.

## STEP 6: Plugging in the cameras



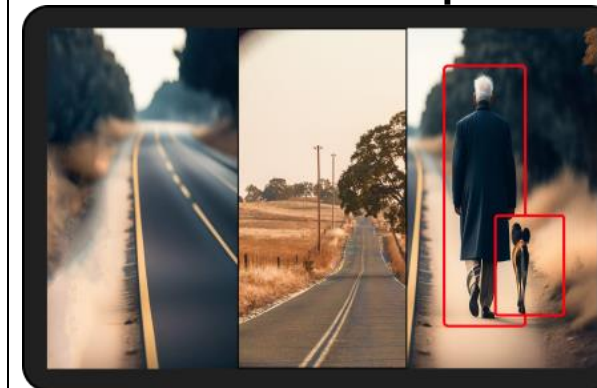
Plug in the cameras in the SMAG Terminal as shown here.

For VIEW to work adequately, the cameras need to be connected in this exact order.

Alternatively, you can customize which camera port you would like to use in VIEW's application settings. To learn how, refer to 7. System Maintenance Widget, B) Camera Port Selection for instructions in the Operating Instructions Manual here:

[Download VIEW's Operating Instructions](#)

## STEP 7: Installation completed



Congratulations! You have successfully installed VIEW in your SMAG Terminal.

Now you're probably wondering: How does this work? The VIEW Operating Manual provides detailed instructions to ensure safe and effective usage, from powering on to how to utilize settings to get the best user experience.

[Download VIEW's Operating Instructions](#)



Learn more about VIEW at:

<https://access.agcocorp.com/en/products/view.html>

