

# SMART TOP LINK

Even spread pattern in every pass



## IN THE BOX

The Smart Top Link kit includes one mount 500, 700, 800 or 900 and only some hydraulic components.



HYDRAULIC PARTS



HYDRAULIC BLOCK



ECU



HARNESS



MOUNT 500



MOUNT 700



MOUNT 800



MOUNT 900

You will also need the following:

**HYDRAULIC HOSES**, presented with Dunlop Hiflex codes:

Common components	Qty	DH item	HOSE 1: PUMP	Qty	DH item	Length
	2	24-XOCL-15M22		1	2SC-1/2" Hose	0,7m
	1	25-C23071-12			A50179-08-08	
	1	25-C23071-12			A50A50-08-08	
	1	25-C23072-06				
	2	26-04510-06	HOSE 2: TANK	1	2SC-1/2" Hose	1m
	1	25-C26914-06-R			A50146-08-08	
	1	24-XOCL-10M			A50A50-08-08	
			HOSE 3: LS	1	2SC-1/4" Hose	1m
					A50A50-05-04	
					500120-06-04	

**HYDRAULIC COMPONENTS**, choose according to your Fendt model:

Components Fendt 500-724	Qty	DH item	Components Fendt 828-900	Qty	DH item
	1	24-XEFL-22		1	24-XRL-28
	1	24-EGEL-22R		1	24-XEFL-28
	1	24-XRL-22		1	24-XREFL-28-15
	1	24-XREFL-22-15		1	24-EGEL-28R12
	1	24-XEFS-20		1	24-XRS-25
	1	24-EGES-20R		1	24-XEFS-25
	1	24-XREFS-20-16		1	24-XREFS-25-16
	1	24-XRS-20		1	24-EGES-25R12

## INSTALLATION TO THE TRACTOR - 45min

Fendt 700,800 & 900 series machines. Installation follows Fendt 700.  
More detailed instructions & videos go to [agcocorp.access.com](http://agcocorp.access.com) or scan the QR-code.





## REMOVE AND REPLACE (TRACTOR HYDRAULICS) 1/5

Note – pump and tank hoses can be directly plugged into the quick coupler if your spreader does not require load sensing hydraulics.



1. Remove the left-hand hydraulic fitting, for easy access to the pump fitting on the right-hand side.



2. Remove the pump fitting and replace with the splitter fitting (make sure you have the correct fitting. The pump and tank fittings do have minor differences)

FENDT 500-724	FENDT 828-900
1x Adjustable T-Fitting (24-XEFL-22)	1x Adjustable T-Fitting (24-XEFL-28)
1x Reduser (24-EGEL-22R)	1x Reduser (24-EGEL-28R12)
1x Reduser (24-XREFL-22-15)	1x Reduser (24-XREFL-28-15)
1x Bulkhead (24-XRL-22)	1x Bulkhead (24-XRL-28)



3. Replace the initial left hand hydraulic fitting back to the machine



4. Remove the tank fitting and replace with the splitter fitting.

FENDT 500-724	FENDT 828-900
1x Adjustable T-Fitting (24-XEFS-20)	1x Adjustable T-Fitting (24-XEFS-25)
1x Reduser (24-EGES-20R)	1x Reduser (24-EGES-25R12)
1x Reduser (24-XREFS-20-16)	1x Reduser (24-XREFS-25-16)
1x Bulkhead (24-XRS-20)	1x Bulkhead (24-XRS-25)

## HYDRAULIC BLOCK ASSEMBLY 2/5



5. Install the male – male fitting with seal into the LS pump outlet

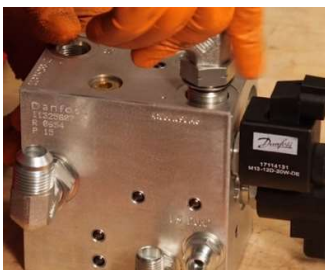
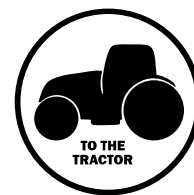
1x Seal, M14 (08-USITM-14)  
1x Straight M14 – 3/8" (26-04000-06-M14) 30Nm

Note! Grease the seal



6. Install the 90-degree angle fitting to the LS AUX outlet

1x Seal, M14 (provided with the kit)  
1x Straight M14 – 3/8" (provided with the kit)  
1x 90 Angle, 3/8" (provided with the kit)  
1x Quick coupler 3/8", female (provided with the kit)



7. Install the 90-degree angle for both the tank and pump outlets

2x Adjustable 90 Angle, M22 (24-XOCL-15M22)

Note! Grease the seal



8. Finally, mount the 2 top link quick couplers.

2x Straight M18 - 1/2" (26-04000-08-M18)

2x Seal, M18 (08-USITM-18)

2x Seal, BSP 1/2" (08-USITR-08)

2x Quick coupler 1/2", female (25-C23071-08)

### MOUNTING THE HARDWARE ON THE TRACTOR 3/5



9. Remove the Existing top link holder from the tractor.



10. Replace this with the new smart top link mount, utilising the same bolt holes.

1x Mount



11. Place the hydraulic block onto the Smart Top Link mount and secure it via the two bolt holes underneath the bracket.

1x Hydraulic block (with installed fittings)



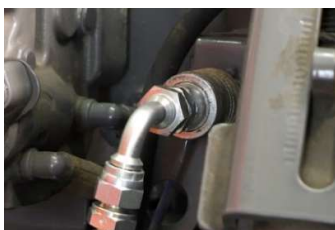
12. Run the hoses from the tank and pressure splitters up to the necessary fittings on the hydraulic block. Pay attention to the routing so the hoses don't get damaged over time

1x Tank hose

1m long 2SC-1/2" hose  
with straight L15 DKOL Fitting (A50146-08-08)  
with 15L - 90 DKOL Fitting (A50A50-08-08)

1x Pressure hose

0,7m long 2SC-1/2" hose  
with 16S-1/2" DKOL Fitting (A50179-08-08)  
with 15L - 90 DKOL Fitting (A50A50-08-08)



13. Run the LS pump line from the hydraulic block to the tractors LS quick coupler

1x LS Pump hose

1m long 2SC-1/4" hose  
with L10-1/4" 90 DKOL Fitting (A50A50-05-04)  
with 3/8" - 1/4" Reduser Fitting (500120-06-04)

## INSTALLING THE ELECTRONICS ON THE TRACTOR 4/5



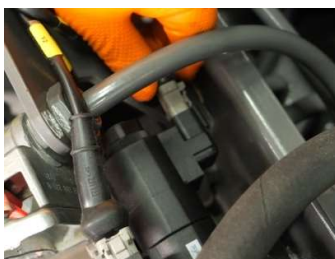
14. Mount the ECU onto the Smart Top Link bracket

1x ECU



15. Mount the Hella socket onto the Smart Top Link bracket.  
The Hella socket gets plugged into ECU port "D"

1x Hella socket with cable



16. For the hydraulic harness, plug the three connectors into the block, making sure configuration matches wiring diagram (**see below**).

This harness gets plugged into ECU port "A"

1x Hydraulic harness



17. Now run the cable for the ISOBUS, this gets plugged into ECU port "C"

1x ISOBUS harness



## INSTALLING THE NEW TOP LINK HOLDER 5/5

Note – Top link holder steel rod



18. Line the Ball up with the hole on the steel rod.

1x Ball  
1x Steel rod



19. Punch the roll pin through to secure.

1x Pin



20. Place the plastic grommet in the top link holder hole and insert the steel rod.

1x Plastic grommet



21. Insert the spacer and spring to the steel rod

1x Spacer  
1x Spring



22. Push the rod through the second hole and secure the washer, then punch through the second roll pin.

1x Washer  
1x Pin



23. The Smart Top Link is now installed to the tractor, next follow the **“To the implement”** installation guide to install the parts to the implement.







## DIFFERENCES IN INSTALLATION BETWEEN 800 & 900 SERIES MACHINES



### 800 SERIES MOUNT (EXTRA BACK PLATE)

- Remove the 2 bolts above the top link pin
- Remove the 2 bolts shown at the top of the hydraulic system
- Fit the back plate and replace all bolts
- Now mount the smart top link mount to the back plate



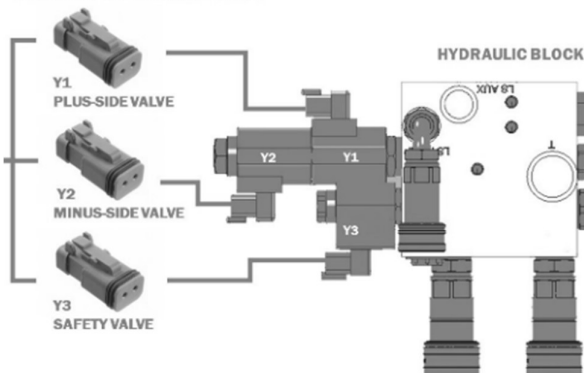
### 900 SERIES MOUNT (EXTRA BACK PLATE)

- Add supplied bolt on the right of the main top link support frame as shown.
- Remove the bolt shown and replace it with the new bolt and bracket supplied
- The main mount is now ready to fit on with 4x bolts



## ELECTRICAL DIAGRAM

### HYDRAULIC VALVE CONNECTORS



## TIGHTENING TORQUES

Hydraulic block		Hose couplings, DKOL	
M14x1,5	28 Nm	10L (M16x1,5)	30 Nm
M18x1,5	36 Nm	15L (M22x1,5)	76 Nm
M22x1,5	48 Nm	16S (M24x1,5)	88 Nm
Mounting bolts	30 Nm		
Connector (with O-ring)		Connector (Nut)	
15L (M22x1,5)	45 Nm	15L (M22x1,5)	80 Nm
22L (M30x2)	100 Nm	22L (M30x2)	150 Nm
28L (M36x2)	147 Nm	20S (M30x2)	190 Nm
20S (M30x2)	120 Nm	28L (M36x2)	200 Nm
25S (M36x2)	195 Nm	25S (M36x2)	210 Nm