



SMART TOP LINK

Even spread pattern in every pass

IN THE BOX

The Smart Top Link kit includes one mount 500, 600, 700, 800 or 900 and only some hydraulic components.



HYDRAULIC PARTS



HYDRAULIC BLOCK



ECU



HARNESS



MOUNT 500



MOUNT 600



MOUNT 700gen6



MOUNT 700gen7



MOUNT 800



MOUNT 900

You will also need the following:

HYDRAULIC HOSES, presented with Dunlop Hiflex codes:

Common components	Qty	DH item	HOSE 1: PUMP	Qty	DH item	Length
	2	24-XOCL-15M22		1	2SC-1/2" Hose	0,7m
	1	25-C23071-12			A50179-08-08	
	1	25-C23071-12			A50A50-08-08	
	1	25-C23072-06				
	2	26-04510-06	HOSE 2: TANK	1	2SC-1/2" Hose	1m
	1	25-C26914-06-R			A50146-08-08	
	1	24-XOCL-10M			A50A50-08-08	
			HOSE 3: LS	1	2SC-1/4" Hose	1m
					A50A50-05-04	
					500120-06-04	

HYDRAULIC COMPONENTS, choose according to your Fendt model:

Components 500-700gen6	Qty	Item	Components 700gen7-900	Qty	Item
	1	24-XEFL-22		1	24-XRL-28
	1	24-EGEL-22R		1	24-XEFL-28
	1	24-XRL-22		1	24-XREFL-28-15
	1	24-XREFL-22-15		1	24-EGEL-28R12
	1	24-XEFS-20		1	24-XRS-25
	1	24-EGES-20R		1	24-XEFS-25
	1	24-XREFS-20-16		1	24-XREFS-25-16
	1	24-XRS-20		1	24-EGES-25R12

INSTALLATION TO THE TRACTOR - 45min

Installation follows Fendt 700 gen6.

More detailed instructions & videos go to agcocorp.access.com or scan the QR-code





REMOVE AND REPLACE (TRACTOR HYDRAULICS) 1/5

Note – pump and tank hoses can be directly plugged into the quick coupler if your spreader does not require load sensing hydraulics.



1. Remove the left-hand hydraulic fitting, for easy access to the pump fitting on the right-hand side.



2. Remove the pump fitting and replace with the splitter fitting (make sure you have the correct fitting. The pump and tank fittings do have minor differences)

FENDT 500-700gen6
 1x Adjustable T-Fitting (24-XEFL-22)
 1x Reduser (24-EGEL-22R)
 1x Reduser (24-XREFL-22-15)
 1x Bulkhead (24-XRL-22)

FENDT 700gen7-900
 1x Adjustable T-Fitting (24-XEFL-28)
 1x Reduser (24-EGEL-28R12)
 1x Reduser (24-XREFL-28-15)
 1x Bulkhead (24-XRL-28)



3. Replace the initial left hand hydraulic fitting back to the machine



4. Remove the tank fitting and replace with the splitter fitting.

FENDT 500-700gen6
 1x Adjustable T-Fitting (24-XEFS-20)
 1x Reduser (24-EGES-20R)
 1x Reduser (24-XREFS-20-16)
 1x Bulkhead (24-XRS-20)

FENDT 700gen7-900
 1x Adjustable T-Fitting (24-XEFS-25)
 1x Reduser (24-EGES-25R12)
 1x Reduser (24-XREFS-25-16)
 1x Bulkhead (24-XRS-25)

HYDRAULIC BLOCK ASSEMBLY 2/5



5. Install the male – male fitting with seal into the LS pump outlet

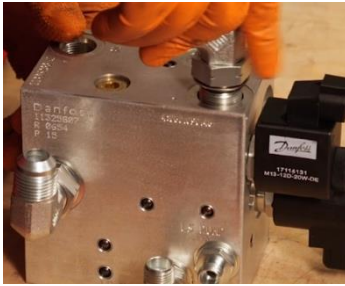
1x Seal, M14 (08-USITM-14)
 1x Straight M14 – 3/8" (26-04000-06-M14) 30Nm

Note! Grease the seal



6. Install the 90-degree angle fitting to the LS AUX outlet

1x Seal, M14 (provided with the kit)
 1x Straight M14 – 3/8" (provided with the kit)
 1x 90 Angle, 3/8" (provided with the kit)
 1x Quick coupler 3/8", female (provided with the kit)



7. Install the 90-degree angle for both the tank and pump outlets

2x Adjustable 90 Angle, M22 (24-XOCL-15M22)

Note! Grease the seal



8. Finally, mount the 2 top link quick couplers.

2x Straight M18 - 1/2" (26-04000-08-M18)

2x Seal, M18 (08-USITM-18)

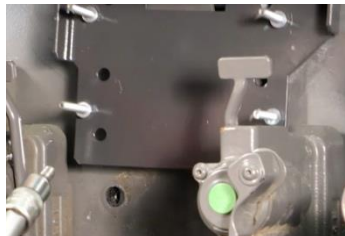
2x Seal, BSP 1/2" (08-USITR-08)

2x Quick coupler 1/2", female (25-C23071-08)

MOUNTING THE HARDWARE ON THE TRACTOR 3/5



9. Remove the Existing top link holder from the tractor.



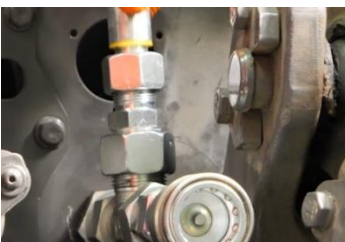
10. Replace this with the new smart top link mount, utilising the same bolt holes.

1x Mount



11. Place the hydraulic block onto the Smart Top Link mount and secure it via the two bolt holes underneath the bracket.

1x Hydraulic block (with installed fittings)



12. Run the hoses from the tank and pressure splitters up to the necessary fittings on the hydraulic block. Pay attention to the routing so the hoses don't get damaged over time

1x Tank hose

1m long 2SC-1/2" hose
with straight L15 DKOL Fitting (A50146-08-08)
with 15L - 90 DKOL Fitting (A50A50-08-08)

1x Pressure hose

0,7m long 2SC-1/2" hose
with 16S-1/2" DKOL Fitting (A50179-08-08)
with 15L - 90 DKOL Fitting (A50A50-08-08)



13. Run the LS pump line from the hydraulic block to the tractors LS quick coupler

1x LS Pump hose

1m long 2SC-1/4" hose
with L10-1/4" 90 DKOL Fitting (A50A50-05-04)
with 3/8" - 1/4" Reduser Fitting (500120-06-04)

INSTALLING THE ELECTRONICS ON THE TRACTOR 4/5



14. Mount the ECU onto the Smart Top Link bracket

1x ECU



15. Mount the Hella socket onto the Smart Top Link bracket. The Hella socket gets plugged into ECU port "D"

1x Hella socket with cable



16. For the hydraulic harness, plug the three connectors into the block, making sure configuration matches wiring diagram (**see below**).

This harness gets plugged into ECU port "A"

1x Hydraulic harness



17. Now run the cable for the ISOBUS, this gets plugged into ECU port "C"

1x ISOBUS harness



INSTALLING THE NEW TOP LINK HOLDER 5/5 (Only for 500/700gen6/800)

Note – Top link holder steel rod



18. Line the Ball up with the hole on the steel rod.

- 1x Ball
- 1x Steel rod



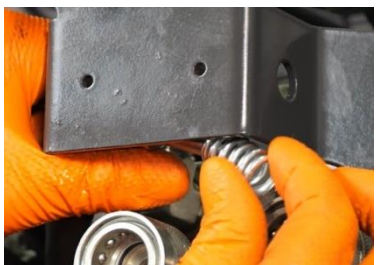
19. Punch the roll pin through to secure.

- 1x Pin



20. Place the plastic grommet in the top link holder hole and insert the steel rod.

- 1x Plastic grommet



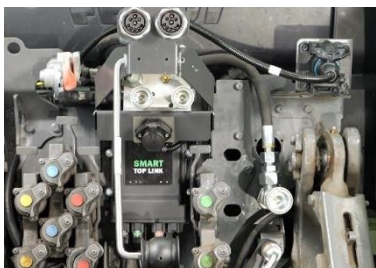
21. Insert the spacer and spring to the steel rod

- 1x Spacer
- 1x Spring

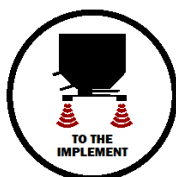


22. Push the rod through the second hole and secure the washer, then punch through the second roll pin.

- 1x Washer
- 1x Pin



23. The Smart Top Link is now installed to the tractor, next follow the **“To the implement”** installation guide to install the parts to the implement.





DIFFERENCES IN INSTALLATION BETWEEN MODELS



600 SERIES MOUNT

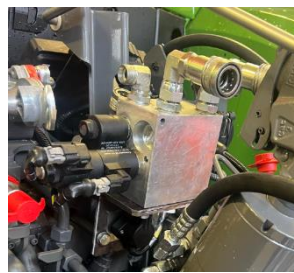
1. Install the bottom part using two M10x1.5x100 bolts and the spacers (picture 1)
2. Install the top part on top of the bottom part, secure with two M10x1.5x40 bolt to the tractor frame (picture 1)
3. Install ECU mount with two M10x1.5x40 bolts to the tractor frame (picture 2)
4. Install hydraulic block to the mount using two M8 bolts (picture 3)
5. Install the metal pipe for LS AUX (picture 4)
6. Install the sensor socket (picture 5)



1



2



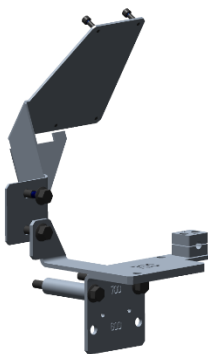
3



4



5



700 SERIES MOUNT (gen7)

- Install the bottom part using two M10x1.5x100 bolts and the spacers (picture 2)
- Install the top part on top of the bottom part, secure with one M10x1.5x40 bolt to the tractor frame (picture 3)
- Install ECU mount with two M10x1.5x40 bolts to the tractor frame (picture 4)
- Install hydraulic block to the mount using two M8 bolts (see 600-series picture 3)
- Install the metal pipe for LS AUX (picture 5)
- Install the sensor socket (see 600-series picture 5)



1



2



3



4

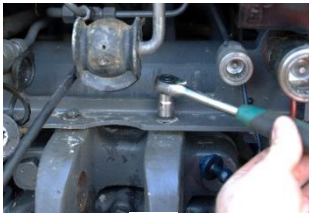


5



800 SERIES MOUNT (EXTRA BACK PLATE)

- Remove the 2 bolts above the top link pin (picture 1)
- Remove the 2 bolts shown at the top of the hydraulic system (picture 2)
- Fit the back plate and replace all bolts (picture 3)
- Now mount the smart top link mount to the back plate (picture 4)



1



2



3



4



900 SERIES MOUNT (EXTRA BACK PLATE)

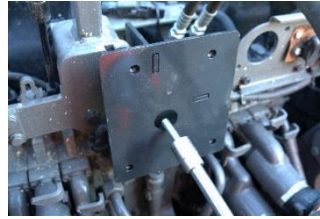
- Add supplied bolt on the right of the main top link support frame as shown (picture 1)
- Remove the bolt shown (picture 2)
- Replace the bolt with the new bolt and bracket (picture 3)
- The main mount is now ready to fit on with 4x bolts (picture 4)



1



2



3

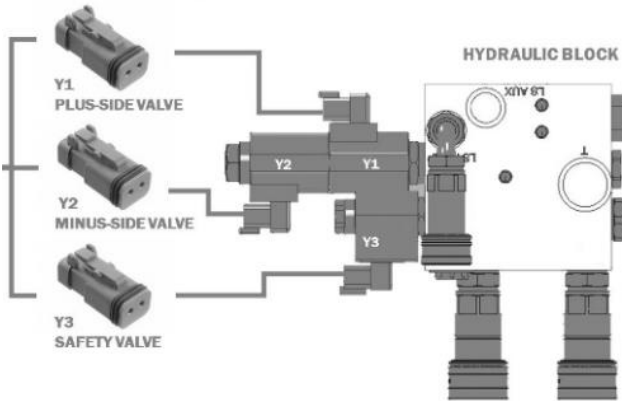


4



ELECTRICAL DIAGRAM

HYDRAULIC VALVE CONNECTORS



TIGHTENING TORQUES

Hydraulic block		Hose couplings, DKOL	
M14x1,5	28 Nm	10L (M16x1,5)	30 Nm
M18x1,5	36 Nm	15L (M22x1,5)	76 Nm
M22x1,5	48 Nm	16S (M24x1,5)	88 Nm
Mounting bolts	30 Nm		
Connector (with O-ring)		Connector (Nut)	
15L (M22x1,5)	45 Nm	15L (M22x1,5)	80 Nm
22L (M30x2)	100 Nm	22L (M30x2)	150 Nm
28L (M36x2)	147 Nm	20S (M30x2)	190 Nm
20S (M30x2)	120 Nm	28L (M36x2)	200 Nm
25S (M36x2)	195 Nm	25S (M36x2)	210 Nm